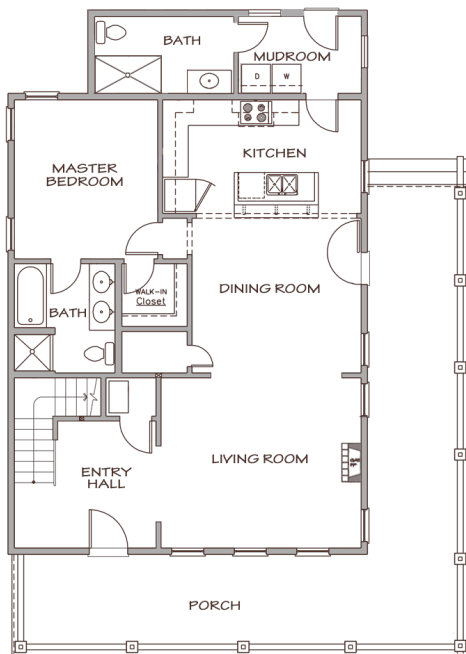


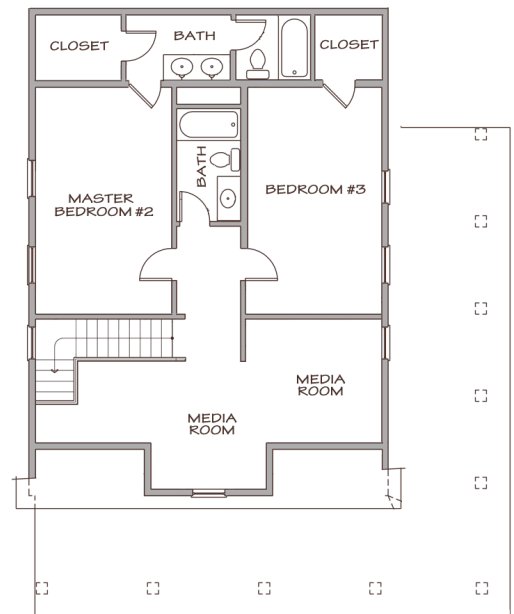
Bainbridge B (Lot #13)

3 bedrooms / 4 bathrooms

Main Floor	1,008 sq. ft
Upper Floor	856 sq. ft
Mudroom	140 sq. ft
Dormer	100 sq. ft
Carriage House	220 sq. ft
Total	2,324 sq. ft



Main Floor



Upper Floor

Information deemed reliable but subject to change and is not guaranteed. As provided in the contract, there may be variations in room dimensions, door swings, and window and door locations. All measurements shown are approximate. We reserve the right to substitute material of comparable quality. Garage, garage service doors and sidewalk locations will be determined by the Town Architect.